

GARDE

The Royal Park Canvas - Ginza 8, Grand Open on March 20th, 2019 GARDE designed its public space area, Lobby, Cafe, Lounge and Restaurant



GARDE Co., Ltd., a global branding and design company with a reputation for space design such as retails, hotels, large commercials, residences and offices. GARDE has worked on the design of the hotel public space of "The Royal Park Canvas - Ginza 8", a new brand of Royal Park Hotels, which will be open on March 20th, 2019.

"The Royal Park Canvas - Ginza 8" will be the first hotel in Tokyo as the new brand "CANVAS" of Royal Park Hotels' to provide a universal "interactive space" suitable for the Ginza evolving while inheriting the tradition.

GARDE has worked on the design in the hotel public space, cafe and lounge, with "vintage, modern and timeless" concept, creating a space that is traditional yet innovative, fusion of old and new, just like the historical city of Ginza. The mid-century vintage furniture of the 50s mixed with contemporary art works is designed to allow you to experience the art. Contemporary arts are displayed to be enjoyed not only visually but auditory as well. GARDE offers the blend of analog, vintage design to digital and high-tech.

We hope you enjoy our design and the space at the "The Royal Park Canvas - Ginza 8" opening business on March 20, 2019.

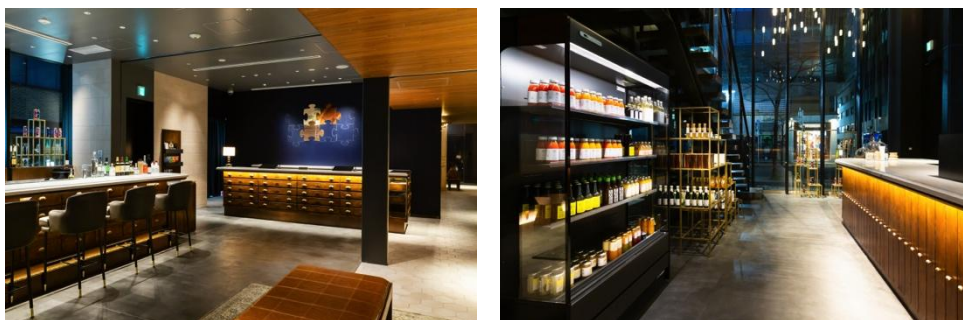
GARDE

【Designed Space】

1F ENTRANCE LOBBY & CAFE

On the wall of the reception, an artist group "Chim ↑ Pom" puzzle art is set up. This series of work entitled "It's the wall world" which Chim ↑ Pom has been producing since 2014, this time it was made specially for this hotel project. Puzzle production and a video "Place to be connected with people through travel / Communication "(Behind the scene) can be watched in the 2F lounge.

Also, next to the 1F lobby entrance, we offer 10meter long board counter cafe (Tea salon.)



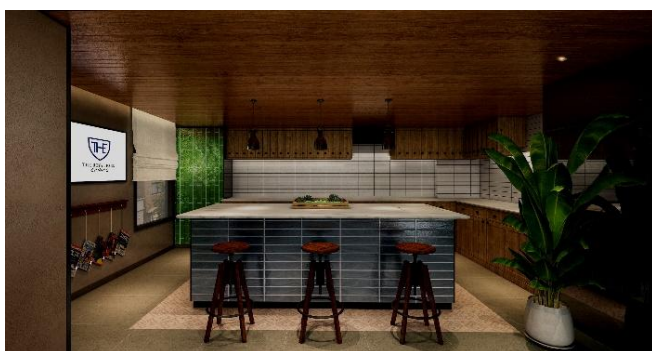
2F CANVAS LOUNGE

With the theme of "vintage modern", mid-century vintage interiors of 1950 – 60's are placed, they offer an open and comfortable space for hobbies and work. We believe the chain of space where people and ideas gather will be the driving force to create something new.



2F CANVAS KITCHEN

The space that can be used as a private kitchenette can accommodate events according to lifestyle, and it functions as a communication space connecting the city (GINZA) and people.



GARDE

M2F FLAVOR&SOUND CULTURE LOUNGE

At the elevator hall of the second floor, artist Yagi Lyota's sound shower art is installed. You can experience the shower of sound like coming out from water fall. Also, carefully selected records are displayed in "Music Library". Personal record player is rented out and there is a space where you can enjoy music by yourself.



13F CONCEPT ROOM

“What if the architect team of Okuno Building, a modern building that caught the eyes of people in Ginza after the war, designed a room of the hotel? what kind of space will it be?” are based of the concept of this room.



14F RESTAURANT

Based on the design concept “timeless modern,” refined interior and the terrace zone on the 14th floor which can overlook Odaiba from Ginza, has become an attractive space.



GARDE

【Collaborated Artists】

Art Coordination plug in + Takeda Natane (JP)

http://plugin-plus.com/ja/about_natane_takeda/

Chim ↑ Pom (JP)

http://www.mujin-to.com/artist_chimpom.htm

Artist group established on 2005, with Ryuta Ushiro, Yasutaka Hayashi, Ellie, Masataka Okada, Motomu Inaoka and Toshinori Mizuno. They pursued the reality of the times and released a series of strong works with the message that intervened fully in modern society. Not only participate in exhibitions around the world, but also develop various projects themselves.

Iván Argote (CO)

https://www.perrotin.com/artists/Ivan_Argote/84#news

Visual artist from Colombia, various expression method are file, sculpture, collage and public space.

Jonathan Monk (UK)

<http://www.taronasugallery.com/artists/jonathan-monk/>

Imitation of art creates art, he is known as an artist that focus on the process of creation of arts. A conceptual artist who attempts to reconstruct a new work by extracting from great artists work from the past and trying to add new meaning and value to it.

Hank Wills Thomas (US)

<http://www.jackshainman.com/artists/hankwillis-thomas/>

Conceptual artist from US, mainly merchandise product, media, pop culture related.

Lyota Yagi (JP)

http://www.mujin-to.com/artist_yagi.htm

Using off-the-shelf items, creates art that embody human perception and engineering systems. Expression methods are diverse, including acoustic works, objects, images, interactive works and installations.



1F ENTRANCE LOBBY

GARDE

【Hotel Detail】

Open : 2019/03/20 (Wed)

Address : 8-9-4 Ginza Chuo-ku Tokyo

Access : Tokyo Metro Ginza Line "Ginza Station" A4 Exit 5min

<https://www.canvas-ginza8.jp/>

【Outline of a facility】

Architecture : Steel construction 14floor above grand, height 47.7m

Number of rooms : 121rooms (3-13 floor)

Facility : 1st floor cafe, 2nd floor lounge, private kitchen, music library, fitness gym, 13th floor concept room, 14th floor restaurant

Developer : Kenedix Inc.

Hotel operation : Space Design, Inc.

Hotel management : Royal Park Hotels and Resorts Company, Limited.

【GARDE】

GARDE is an international branding and Design Company based in Tokyo with offices in Osaka, Hong Kong, Shanghai, Singapore, Kuala Lumpur, Milan, Paris, New York and Los Angeles. We offer services in the following sectors: retail, residential, hospitality, F&B, office, entertainment, public space, healthcare and mixed-use facilities and beyond. We are committed to supporting our clients' design needs via our three pillars of expertise – Consulting, Design and Coordination.

Kenji Muro

Managing Executive Officer, Asia Pacific President, Design Director

Senior Director, Kenji Muro who has taken the lead at the front line from the time of entering Asia, has retained numerous achievement in commercial space design in China and other Asian countries, and has gained high praise both here and abroad. The representative projects are Cerulean Tower Tokyu Hotel Executive Lounge & Junior Suite - FUJI (2018) and Han Guang Department Store whole renovation business in Beijing(2017), Kuala Lumpur Quarza Mall design work (2016), Shangri - La Residence Dalian (2015) and others. He is in charge of all the design for The Royal Park Canvas - Ginza 8.

【Credit in article】

Name : The△Royal△Park△Canvas - Ginza 8 △ = one space TEL.03-6205-8010

About design: GARDE Co.,Ltd. TEL.03-3407-0007

About Art coordination: plug in + info@plugin-plus.com

【Inquiry regarding press release】

A.KA Tokyo TEL: 03-5468-3388 MAIL: press04@akatokyo.com Kamiya and Honda